



TATA TECHNOLOGIES

Corporate Overview

November 2022

 Engineering a *better world.*

WHY TATA TECHNOLOGIES

Analyst Recognition

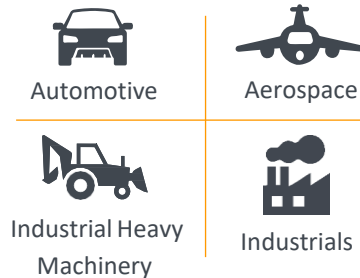


Tata Technologies has been positioned in the ‘Leadership Zone’ in the Zinnov Zones Global ER&D services report for four consecutive years. Zinnov has positioned Tata Technologies as 1st amongst all India-based Automotive ER&D ESPs for the second consecutive year. Zinnov also has positioned Tata Technologies as Global Leader in the Automotive ER&D, Aerospace ER&D, as well as Digital Thread services.

Company of the Year 2020



Industries Served



Partner Ecosystem

Tata Technologies has forged extremely valuable alliances throughout the Product Engineering, Product Life Cycle Management and Digital Services for manufacturing industry. Simply put, the strength of our alliances helps you connect your business solutions to the needs of your customers. That’s better for you, better for your customers. Tata Technologies is proud of our key alliances.

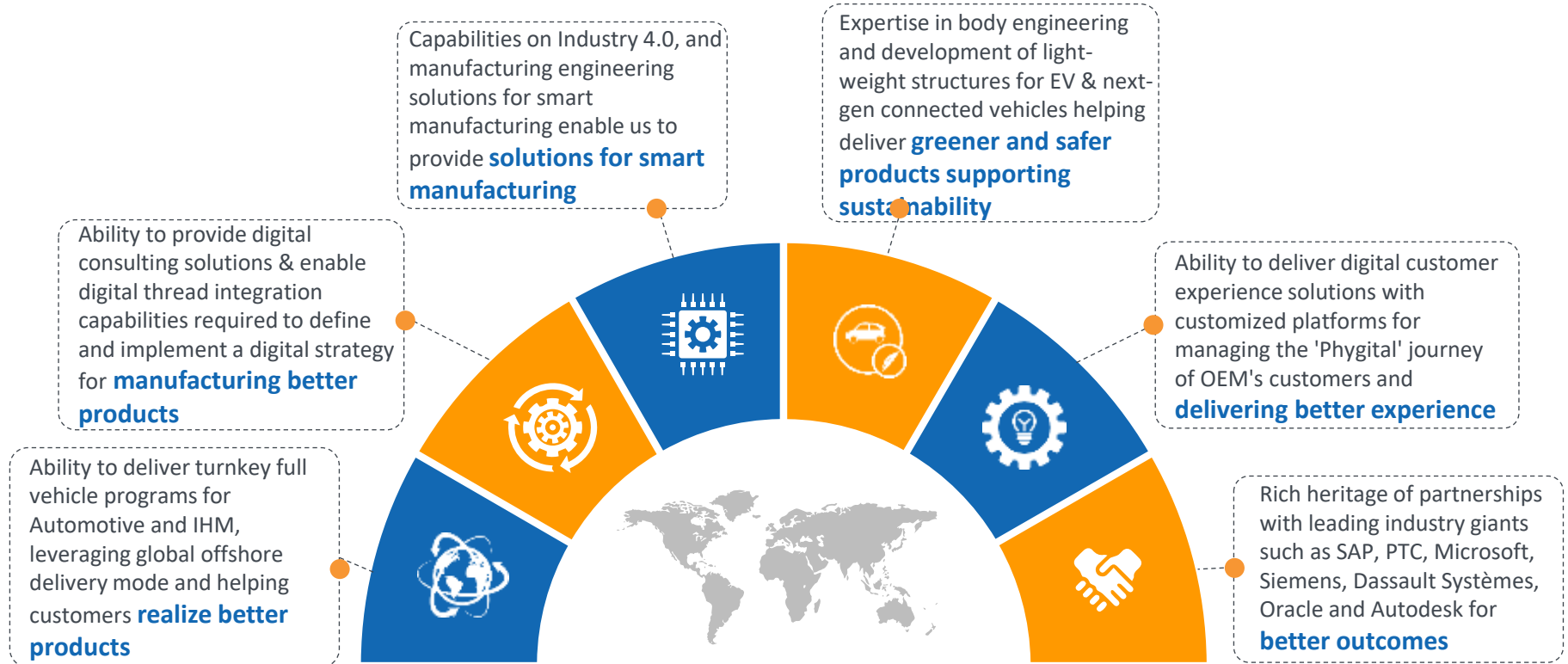


Commitment to Business Excellence

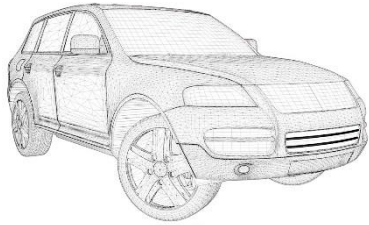
Tata Technologies has adopted the Tata Business Excellence Model (TBEM) as an organizational improvement methodology to achieve excellence in the way it runs its business and manages the operations. TBEM ensures focus on critical aspects of the business including Leadership, Strategy, Customer, Workforce and Processes and these are assessed for process maturity as well as competitive outcomes that they deliver. The Company achieved a score of 553 in the last formally conducted TBEM assessment and was positioned under the ‘Emerging Industry Leader’ category. From Quality Management system perspective, the Company has adopted globally recognized standards across its key delivery centers to establish its enterprise-level Quality Management System(QMS) and Information Security Management System (ISMS).

AS 9100D | ISO 27001: 2013 | ISO 9001:2015

OUR DIFFERENTIATED VALUE PROPOSITION



AUTOMOTIVE CORE DOMAINS



Market Definition & Product Strategy



Production Launch & Continuous Improvement



Embedded



Concept, Styling & Vehicle Architecture



Detailed Engineering & Design



Product & Process Validation



Production Readiness



Connected



Manufacturing Process & Resource Planning

AUTOMOTIVE OFFERINGS

ENGINEERING



- Body & Vehicle • Value Engineering
- Chassis & Power Train
- Electrical & Electronics • ADAS
- Design Studio

MANUFACTURING



- Process Simulation
- Robotic Simulation
- AME Human Simulation
- Factory Layout Simulation

FULL VEHICLE PROGRAM



- Definition • Concept • Pre-Development
- Series Development
- Pre-Series & Series production
- Marketing & Sales • After sales

AUTOMOTIVE OFFERINGS

EMBEDDED



- Application Software Development
- Basic Software Dev (AUTOSAR)
- System & Software Validation

- Software Defined Vehicle
- System Engineering

- Connected Products & Services
- Product Engg & Innovation
- Digital Enterprise Solution

- Digital Manufacturing
- Customer Experience



DIGITAL

ACCELERATORS



eVMP – Electric Vehicle Modular Platform



5R Rightweighting, solutions using 5R Method



PULSE – Agile, Project Management



Knowledge based Engg Tools/Platform



SCARF



AMP.io



I GET



FACMON



FACTORY MAGIX



 Engineering a *better world.*

For more information about Tata Technologies and what we can do to help create better products for your customers, visit: www.tatatechnologies.com

 /TataTechnologies

 /TataTech_News

 /TataTechnologies

 /TataTechnologies